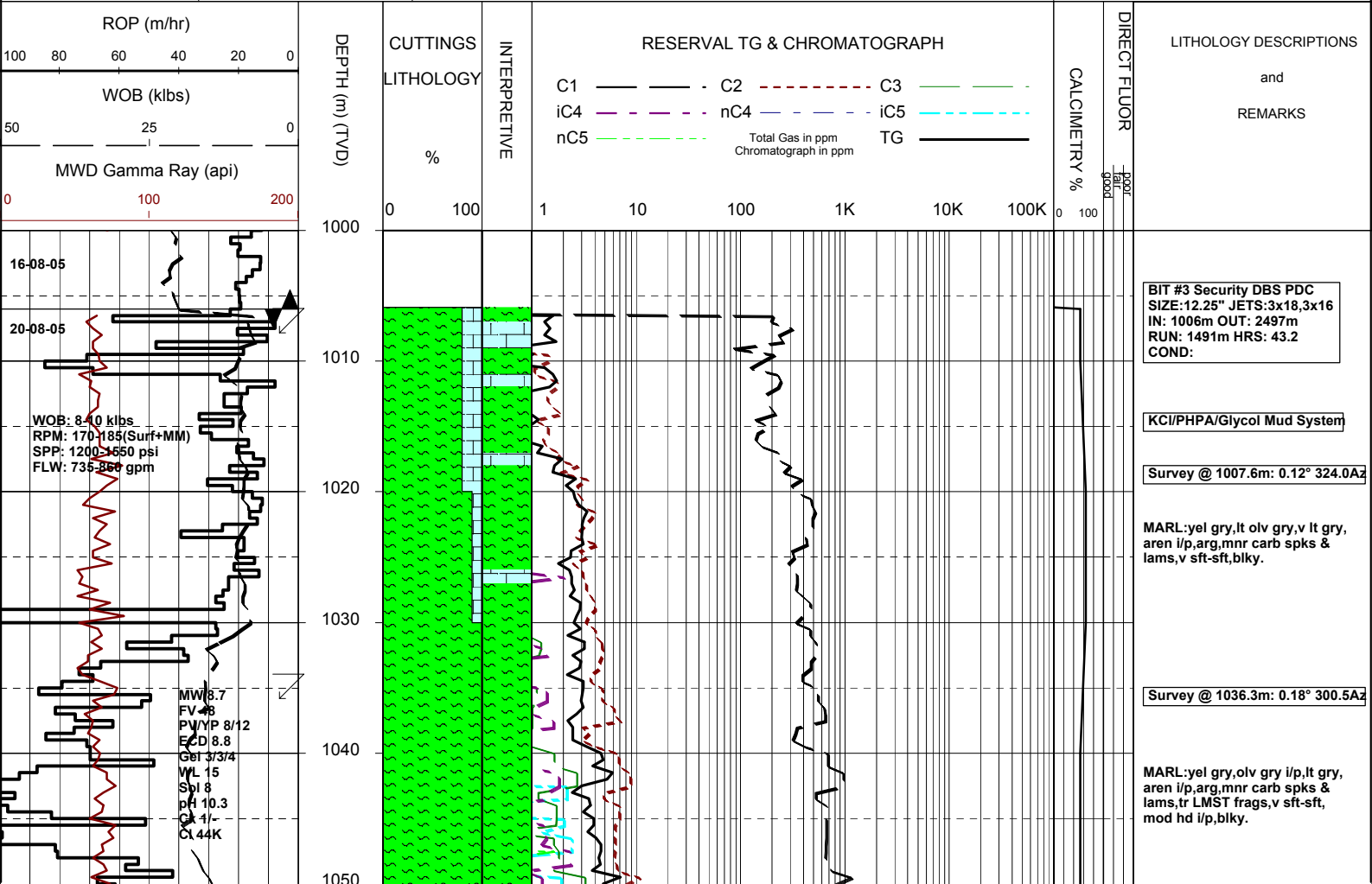
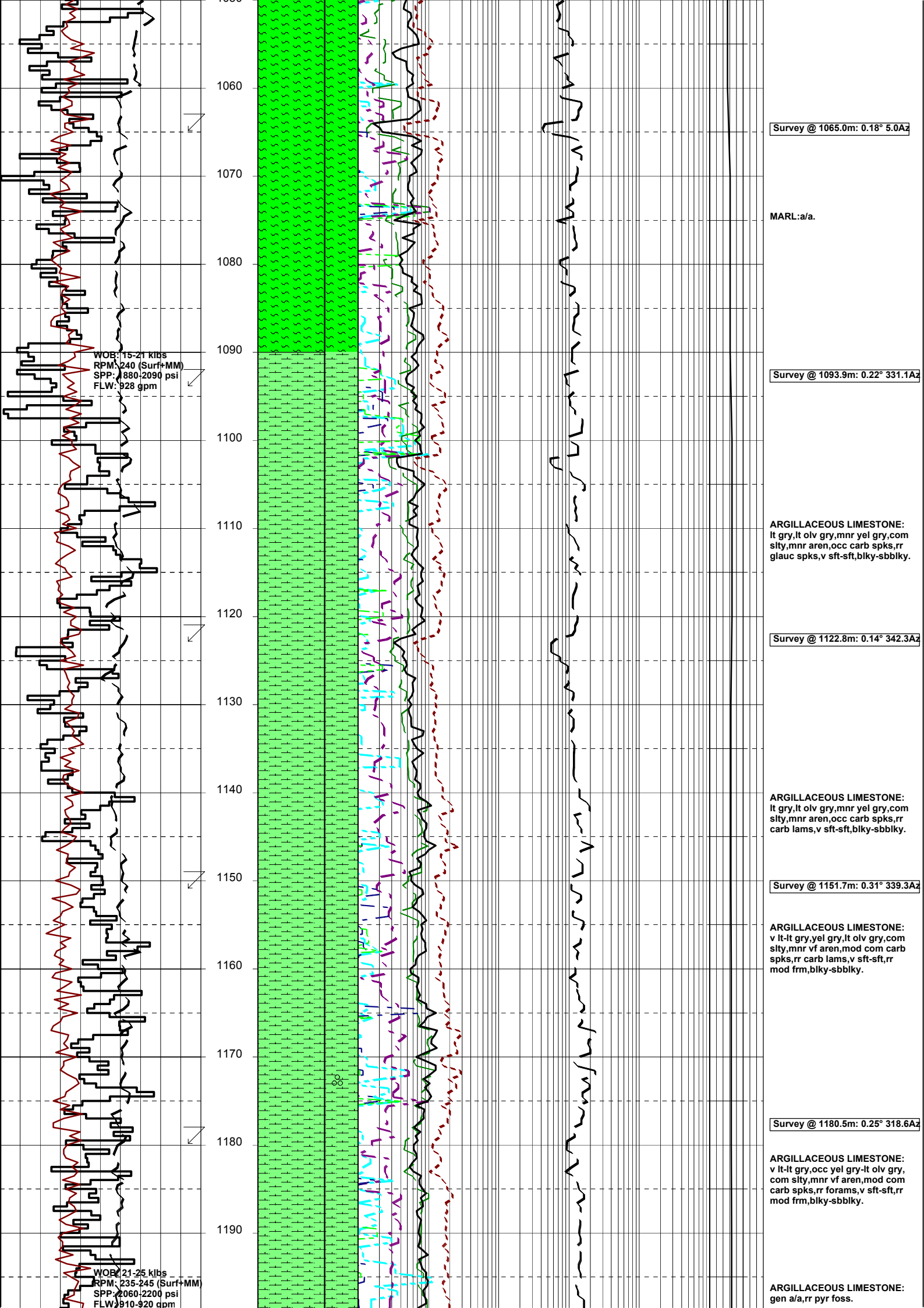


MASTERLOG BASKER 2

GENERAL	POSITION	HOLE / CASING INFO	DATE / DEPTH	ENGINEERS
Country : AUSTRALIA	Latitude : 38°17'58.51"S	17 1/2" Hole to (mMDRT): 1006	Spud Date : 14-08-2005	D. ADDERLEY
Permit : VIC RL6	Longitude : 148°42'24.72"E	12 1/4" Hole to (mMDRT) :	Total Depth Date :	A. DUNN
Field : BASKER	UTM Co-ord X (m E): 649251.9	8 1/2" Hole to (mMDRT) :	Total Depth (mMDRT):	S. RAJA
Basin : GIPPSLAND	UTM Co-ord Y (m N): 5759566	30" Conductor @ (mMDRT) : 208	True Vertical Depth (mTVDSS):	
Well Type : APPRAISAL	RT to MSL (m): 21.5	13 3/8" Shoe @ (mMDRT) : 1000	Log Scale : 1/ 500	
Rig Name : Ocean Patriot	RT to Sea Bed (m): 174	9 5/8" Shoe @ (mMDRT) :	Final Status :	

ABBREVIATIONS		LITHOLOGY LEGEND				ENGINEERING LEGEND	
MW Mud Weight	WOB Weight on Bit (klbs)	Marl	Quartzite	Siltstone	Rudists	Essai non concl	Mud loss
FV Funnel Viscosity	RPM Rotations Per Min	Clay, Sand Lime	ar. Sandstone	f to vf Sand f	Sponges	Aucun fluide re	
PV Plastic Viscosity	FLW Flow Rate (gpm)	do. Shale	bitum. Shale (b)	Fossils	Sporomorphs	TEST Test	RFT
YP Yield Point	SPP Pump Pressure (psi)	ca. Shale	Claystone	Algae	Tigillites	Filtrat	FIT
Gel Gel Strength	RR Re-Run Bit	sandy Shale	Fine SST	Lithic Fragment	Vertebrates	Deviation curve	DST
WL Water Loss	TG Trip Gas	si. Claystone	sa. Shale	Belemnits	Wood silicified	Mud gain	Cement
KCI Potassium Chloride	CG Connection Gas					Boue	
Cl Chlorides	BG Background Gas						
Incl Inclination	DGP Drilled Gas Peak						
Az Azimuth	MM Mud Motor						





WOB: 15-21 klbs
 RPM: 240 (Surf+MM)
 SPP: 1880-2090 psi
 FLW: 928 gpm

WOB: 21-25 klbs
 RPM: 235-245 (Surf+MM)
 SPP: 2060-2200 psi
 FLW: 910-920 gpm

Survey @ 1065.0m: 0.18° 5.0Az

MARL: a/a.

Survey @ 1093.9m: 0.22° 331.1Az

ARGILLACEOUS LIMESTONE:
 lt gry, lt olv gry, mnr yel gry, com
 slty, mnr aren, occ carb spks, rr
 glauc spks, v sft-sft, blk-y-sbbkly.

Survey @ 1122.8m: 0.14° 342.3Az

ARGILLACEOUS LIMESTONE:
 lt gry, lt olv gry, mnr yel gry, com
 slty, mnr aren, occ carb spks, rr
 carb lams, v sft-sft, blk-y-sbbkly.

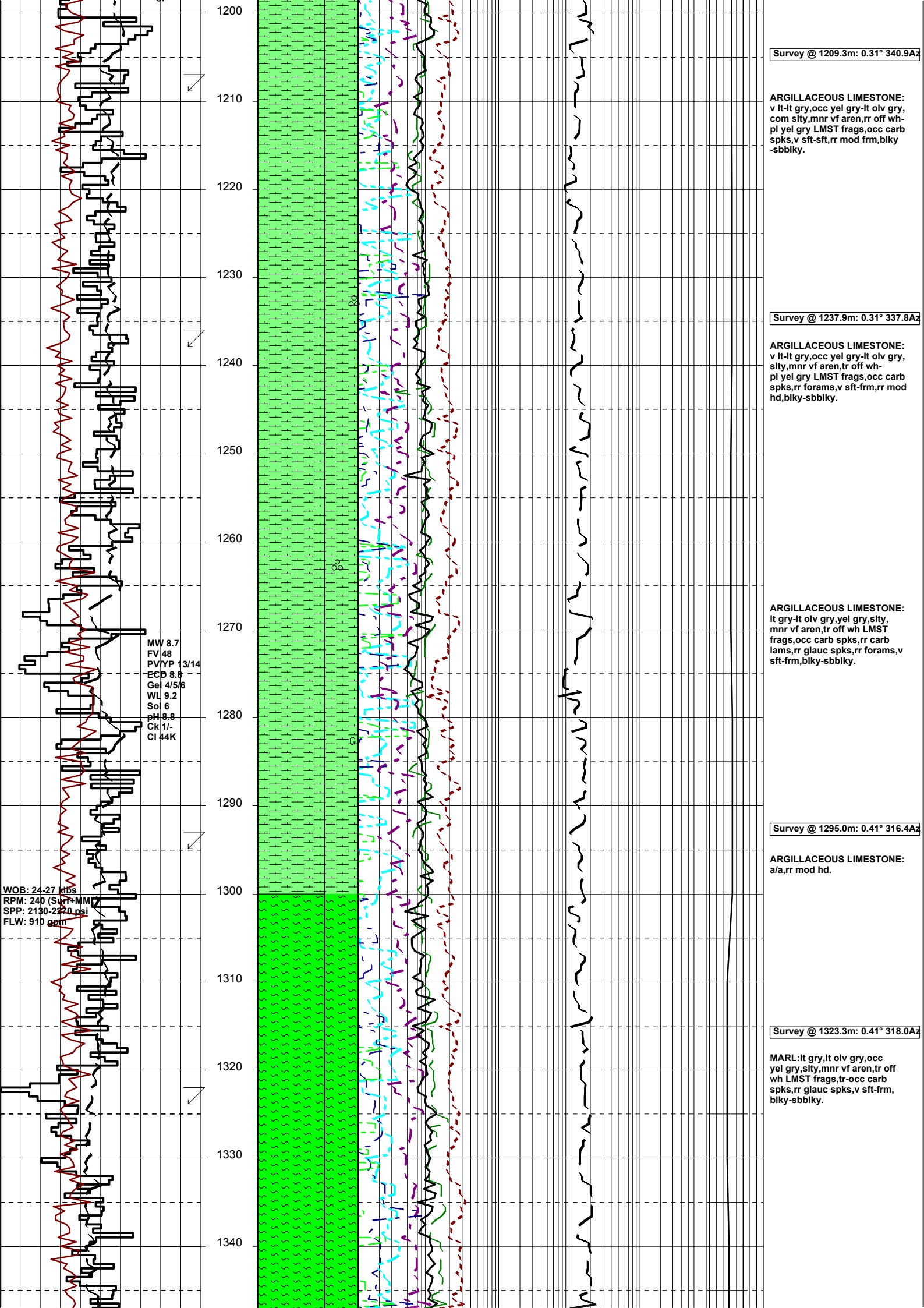
Survey @ 1151.7m: 0.31° 339.3Az

ARGILLACEOUS LIMESTONE:
 v lt-lt gry, yel gry, lt olv gry, com
 slty, mnr vf aren, mod com carb
 spks, rr carb lams, v sft-sft, rr
 mod frm, blk-y-sbbkly.

Survey @ 1180.5m: 0.25° 318.6Az

ARGILLACEOUS LIMESTONE:
 v lt-lt gry, occ yel gry-lt olv gry,
 com slty, mnr vf aren, mod com
 carb spks, rr forams, v sft-sft, rr
 mod frm, blk-y-sbbkly.

ARGILLACEOUS LIMESTONE:
 gen a/a, rr pyr foss.



Survey @ 1209.3m: 0.31° 340.9Az

ARGILLACEOUS LIMESTONE:
 v lt-lt gry,occ yel gry-lt olv gry,
 com slty,mnr vf aren,rr off wh-
 pl yel gry LMST frags,occ carb
 spks,v sft-sft,rr mod frm,blky
 -sbbiky.

Survey @ 1237.9m: 0.31° 337.8Az

ARGILLACEOUS LIMESTONE:
 v lt-lt gry,occ yel gry-lt olv gry,
 slty,mnr vf aren,tr off wh-
 pl yel gry LMST frags,occ carb
 spks,rr forams,v sft-frm,rr mod
 hd,blky-sbbiky.

ARGILLACEOUS LIMESTONE:
 lt gry-lt olv gry,yel gry,slty,
 mnr vf aren,tr off wh LMST
 frags,occ carb spks,rr carb
 lams,rr glauc spks,rr forams,v
 sft-frm,blky-sbbiky.

Survey @ 1295.0m: 0.41° 316.4Az

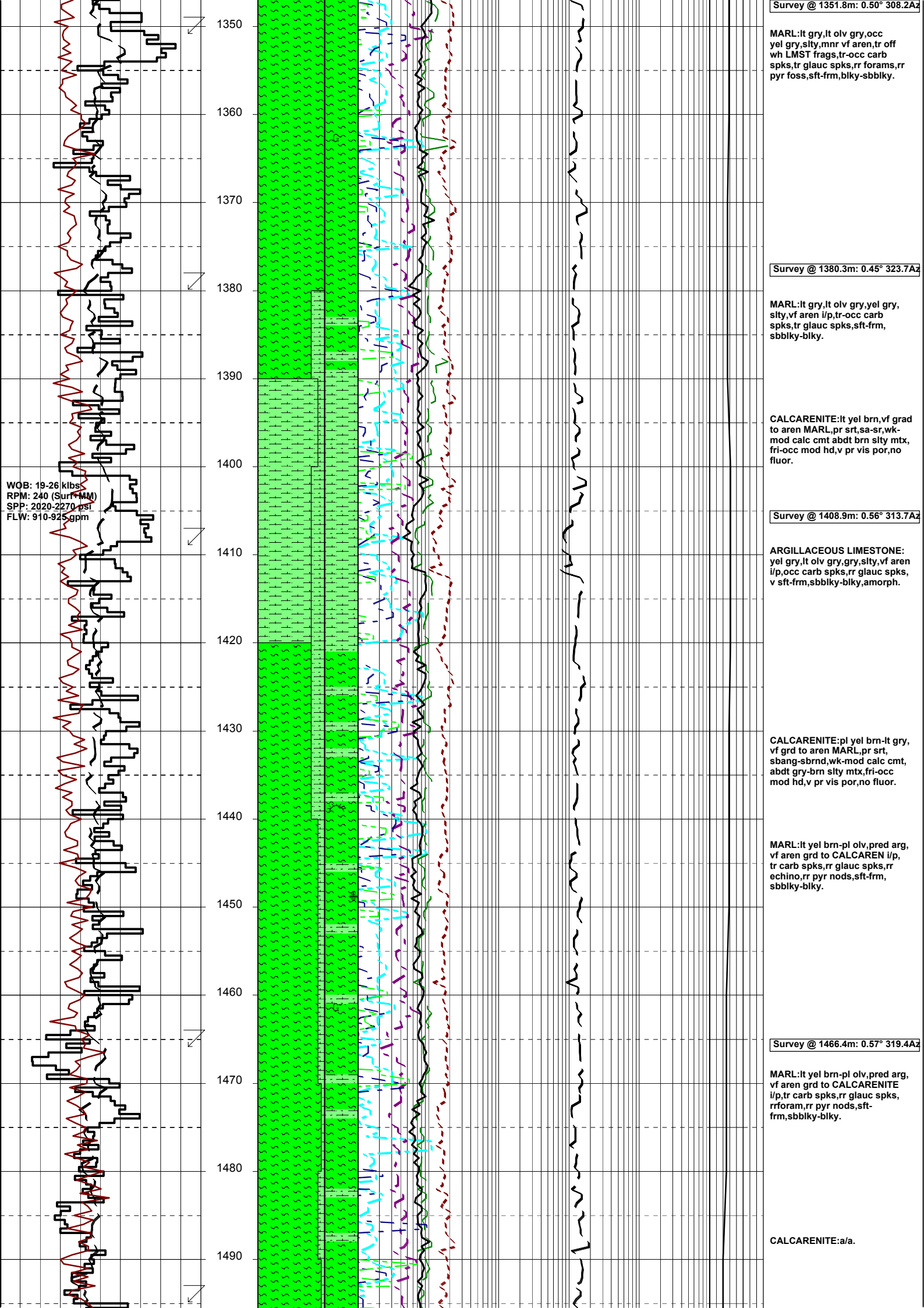
ARGILLACEOUS LIMESTONE:
 a/a,rr mod hd.

Survey @ 1323.3m: 0.41° 318.0Az

MARL: lt gry,lt olv gry,occ
 yel gry,slty,mnr vf aren,tr off
 wh LMST frags,tr-occ carb
 spks,rr glauc spks,v sft-frm,
 blky-sbbiky.

MW 8.7
 FV 48
 PV/YP 13/14
 ECD 8.8
 Gel 4/5/6
 WL 9.2
 Sol 6
 pH 8.8
 CK 1/-
 CI 44K

WOB: 24-27 kbs
 RPM: 240 (Surf-MM)
 SPP: 2130-2270 psi
 FLW: 910 gpm



Survey @ 1351.8m: 0.50° 308.2Az

MARL:lt gry,lt olv gry,occ yel gry,silty,mnr vf aren,tr off wh LMST frags,tr-occ carb spks,tr glauc spks,rr forams,rr pyr foss,sft frm,blky-sbbiky.

Survey @ 1380.3m: 0.45° 323.7Az

MARL:lt gry,lt olv gry,yel gry, silty,vf aren i/p,tr-occ carb spks,tr glauc spks,sft frm, sbbiky-blky.

CALCARENITE:lt yel brn,vf grad to aren MARL,pr srt,sa-sr,wk-mod calc cmt abdt brn silty mtx, fri-occ mod hd,v pr vis por,no fluor.

Survey @ 1408.9m: 0.56° 313.7Az

ARGILLACEOUS LIMESTONE: yel gry,lt olv gry,gry,silty,vf aren i/p,occ carb spks,rr glauc spks, v sft frm,sbbiky-blky,amorph.

CALCARENITE:pl yel brn-lt gry, vf grd to aren MARL,pr srt, sbang-sbrnd,wk-mod calc cmt, abdt gry-brn silty mtx,fri-occ mod hd,v pr vis por,no fluor.

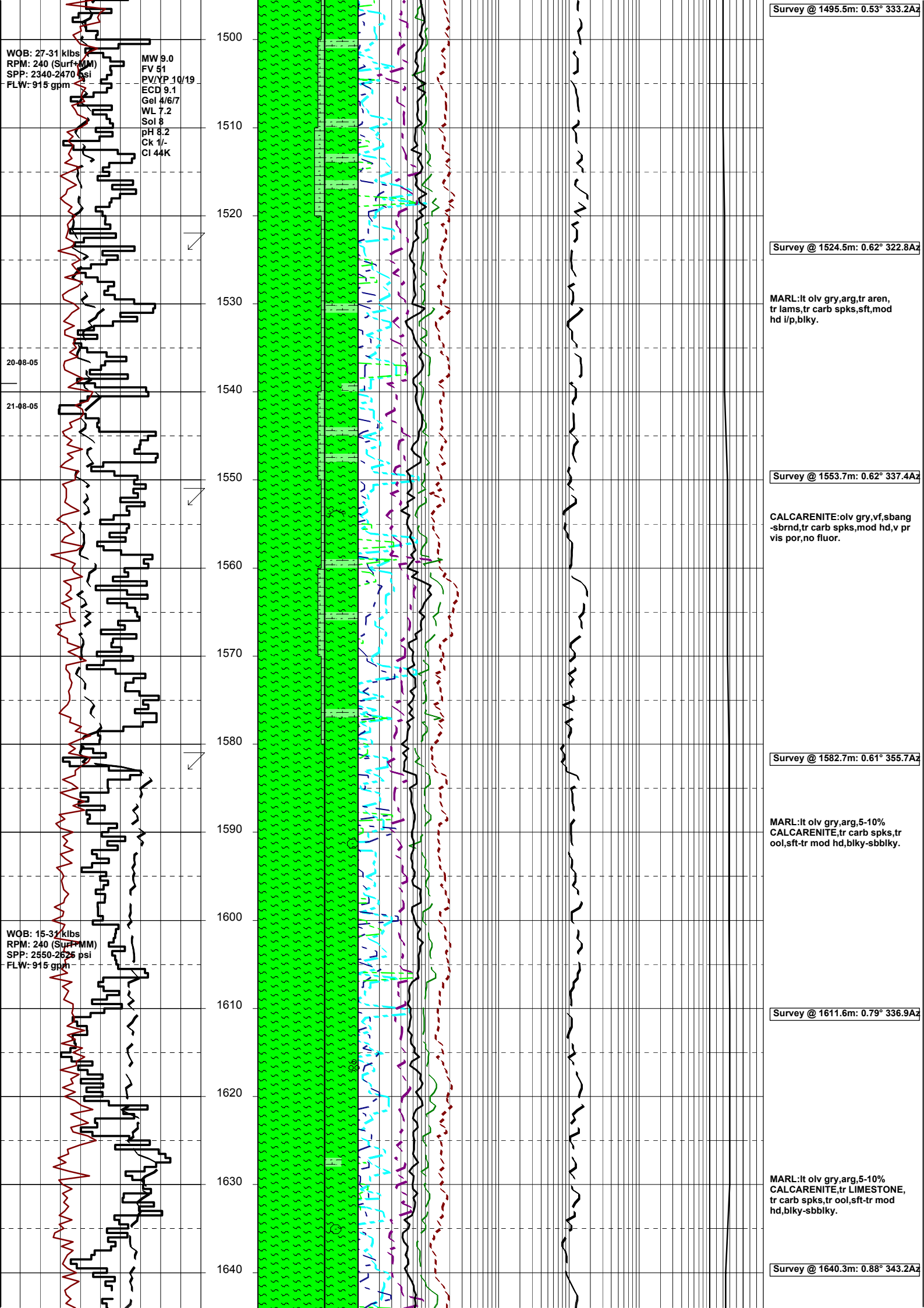
MARL:lt yel brn-pl olv,pred arg, vf aren grd to CALCAREN i/p, tr carb spks,rr glauc spks,rr echino,rr pyr nods,sft frm, sbbiky-blky.

Survey @ 1466.4m: 0.57° 319.4Az

MARL:lt yel brn-pl olv,pred arg, vf aren grd to CALCAREN i/p, tr carb spks,rr glauc spks, rrforam,rr pyr nods,sft frm,sbbiky-blky.

CALCARENITE:a/a.

WOB: 19-26 klbs
 RPM: 240 (Surf+MM)
 SPP: 2020-2270 psi
 FLW: 910-925 gpm



WOB: 27-31 klbs
 RPM: 240 (Surf) MM
 SPP: 2340-2470 psi
 FLW: 915 gpm

MW 9.0
 FV 51
 PV/YP 10/19
 ECD 9.1
 Gel 4/6/7
 WL 7.2
 Sol 8
 pH 8.2
 Ck 1/-
 CI 44K

20-08-05

21-08-05

WOB: 15-31 klbs
 RPM: 240 (Surf) MM
 SPP: 2550-2625 psi
 FLW: 915 gpm

Survey @ 1495.5m: 0.53° 333.2Az

Survey @ 1524.5m: 0.62° 322.8Az

MARL:lt olv gry,arg,tr aren,
 tr lams,tr carb spks,sft,mod
 hd i/p,blky.

Survey @ 1553.7m: 0.62° 337.4Az

CALCARENITE:olv gry,vf,sbang
 -sbrnd,tr carb spks,mod hd,v pr
 vis por,no fluor.

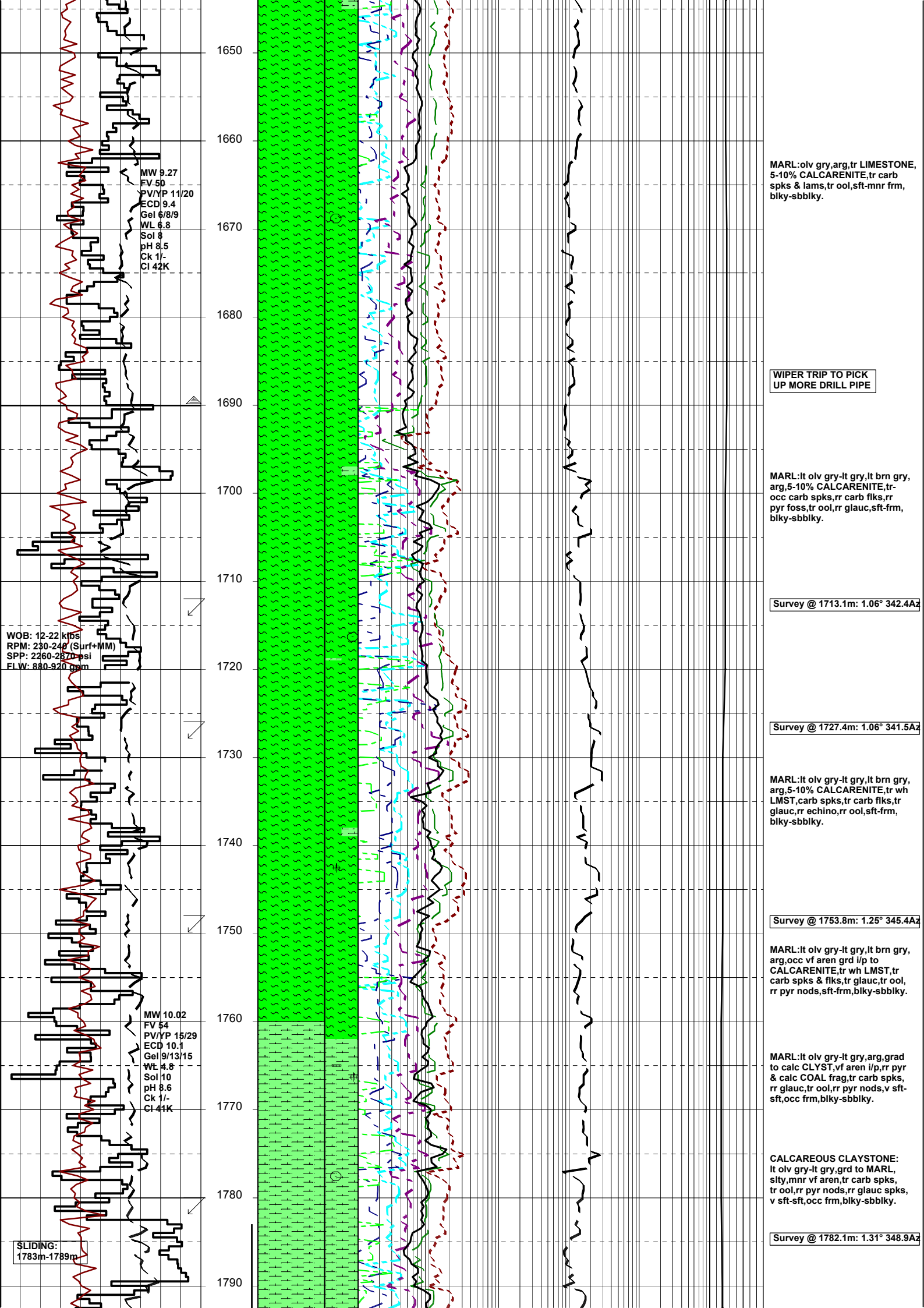
Survey @ 1582.7m: 0.61° 355.7Az

MARL:lt olv gry,arg,5-10%
 CALCARENITE,tr carb spks,tr
 ool,sft-tr mod hd,blky-sbblky.

Survey @ 1611.6m: 0.79° 336.9Az

MARL:lt olv gry,arg,5-10%
 CALCARENITE,tr LIMESTONE,
 tr carb spks,tr ool,sft-tr mod
 hd,blky-sbblky.

Survey @ 1640.3m: 0.88° 343.2Az



MW 9.27
 FV 50
 PV/YP 11/20
 ECD 9.4
 Gel 6/8/9
 WL 6.8
 Sol 8
 pH 8.5
 Ck 1/-
 CI 42K

MARL: olv gry, arg, tr LIMESTONE,
 5-10% CALCARENITE, tr carb
 spks & lams, tr ool, sft-mnr frm,
 blk-y-sbbkly.

WIPER TRIP TO PICK
 UP MORE DRILL PIPE

MARL: it olv gry-it gry, lt brn gry,
 arg, 5-10% CALCARENITE, tr-
 occ carb spks, rr carb flks, rr
 pyr foss, tr ool, rr glauc, sft-frm,
 blk-y-sbbkly.

Survey @ 1713.1m: 1.06° 342.4Az

WOB: 12-22 kips
 RPM: 230-240 (Surr+MM)
 SPP: 2260-2870 psi
 FLW: 880-920 gpm

Survey @ 1727.4m: 1.06° 341.5Az

MARL: it olv gry-it gry, lt brn gry,
 arg, 5-10% CALCARENITE, tr wh
 LMST, carb spks, tr carb flks, tr
 glauc, rr echino, rr ool, sft-frm,
 blk-y-sbbkly.

Survey @ 1753.8m: 1.25° 345.4Az

MARL: it olv gry-it gry, lt brn gry,
 arg, occ vf aren grd i/p to
 CALCARENITE, tr wh LMST, tr
 carb spks & flks, tr glauc, tr ool,
 rr pyr nods, sft-frm, blk-y-sbbkly.

MW 10.02
 FV 54
 PV/YP 15/29
 ECD 10.1
 Gel 9/13/15
 WL 4.8
 Sol 10
 pH 8.6
 Ck 1/-
 CI 44K

MARL: it olv gry-it gry, arg, grad
 to calc CLYST, vf aren i/p, rr pyr
 & calc COAL frag, tr carb spks,
 rr glauc, tr ool, rr pyr nods, v sft-
 sft, occ frm, blk-y-sbbkly.

CALCAREOUS CLAYSTONE:
 It olv gry-it gry, grd to MARL,
 slty, mnr vf aren, tr carb spks,
 tr ool, rr pyr nods, rr glauc spks,
 v sft-sft, occ frm, blk-y-sbbkly.

Survey @ 1782.1m: 1.31° 348.9Az

SLIDING:
 1783m-1789m

WOB: 17-20 klbs
RPM: 225-235 (Surf+MM)
SPP: 2260-2870 psi
FLW: 880-920 gpm

MW 10/02
FV 54
PV/YP 13/26
ECD 10.1
Gel 8/12/
WL 5.4
Sol 10
pH 8.9
GK-1-
CI 43K

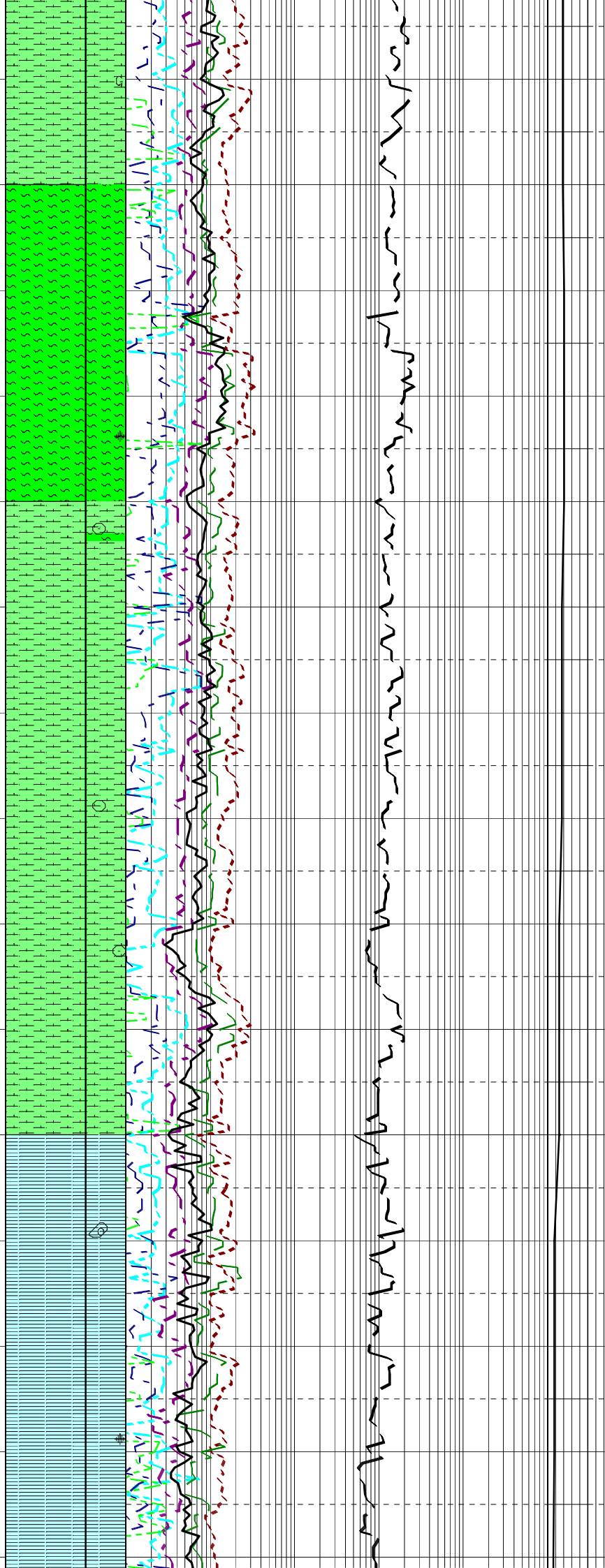
21-08-05

22-08-05

WOB: 17-20 klbs
RPM: 225-235 (Surf+MM)
SPP: 2850-3190 psi
FLW: 860-930 gpm

SLIDING:
1929m-1938m

1800
1810
1820
1830
1840
1850
1860
1870
1880
1890
1900
1910
1920
1930
1940



CALCAREOUS CLAYSTONE:
med lt gry-lt olv gry,slty,mnr vf aren,rr carb spks,rr ool,v sft-sft,occ frm,blky-sbbiky.

Survey @ 1810.7m: 1.32° 347.3Az

MARL:med lt gry-lt olv gry,slty,mnr vf aren,rr carb spks,rr ool,rr pyr lam,v sft-sft,occ frm,blky-sbbiky.

Survey @ 1839.5m: 1.17° 347.3Az

MARL:med lt gry-lt olv gry,slty,mnr vf aren,tr wh LMST frags,rr carb spks,rr carb spks,rr ool,rr pyr nods,v sft-sft,occ frm,blky-sbbiky.

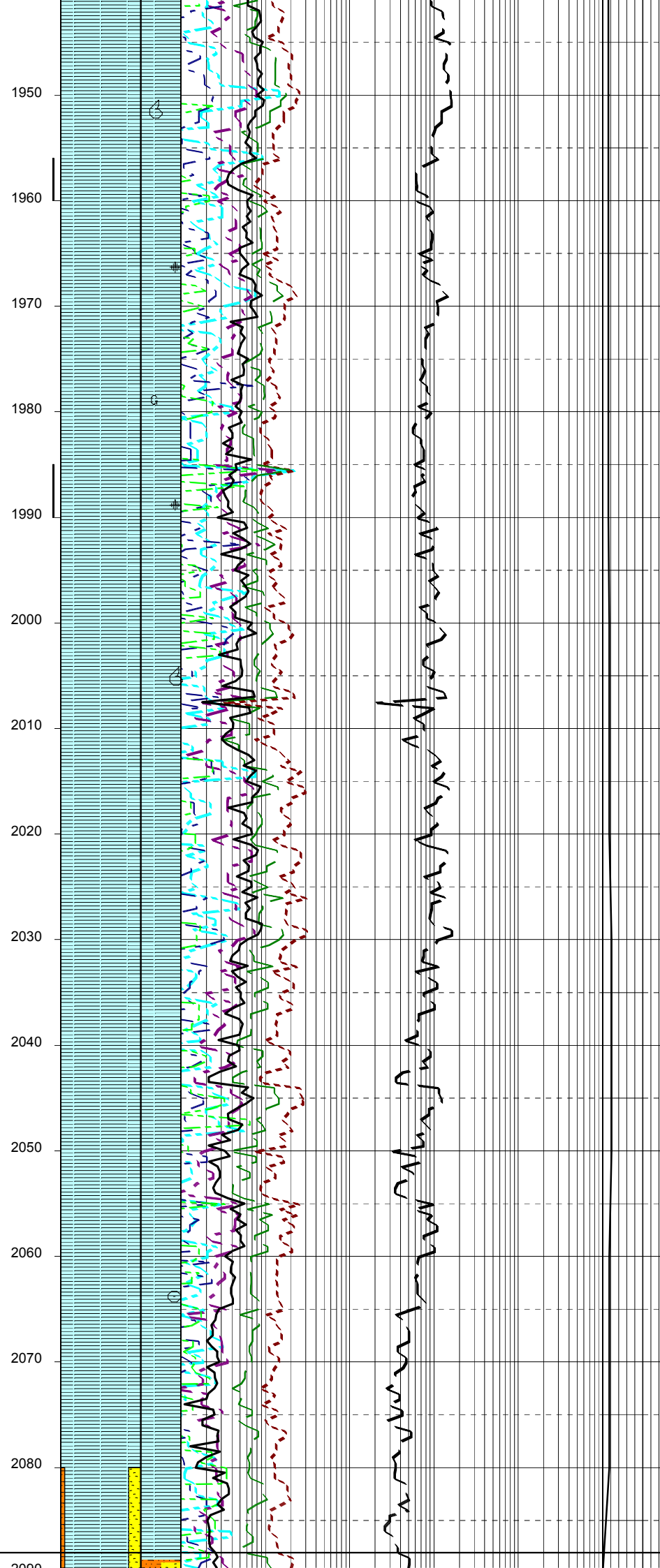
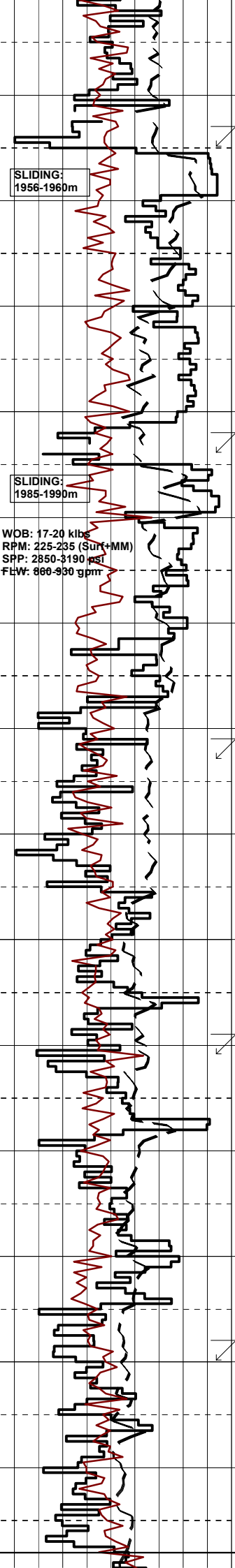
Survey @ 1868.4m: 1.33° 345.6Az

CALCAREOUS CLAYSTONE:
med gry,arg,slty i/p,tr vf aren,tr calcite,tr dissem pyr,tr carb spks & lams,rr ool,sft-frm,blky-sbbiky.

Survey @ 1897.6m: 1.53° 346.9Az

CALCAREOUS CLAYSTONE:
med gry,arg,slty i/p,tr vf aren,tr calcite,tr dissem pyr,tr carb spks & lams,rr ool,tr foss,sft-frm,blky-sbbiky.

Survey @ 1926.7m: 1.67° 346.2Az



CLAYSTONE:lt med gry-med gry, arg,15-20% calc,tr vf aren,tr calcite,tr disse pyr,rr ool, tr foss,sft frm,sbbiky-blky.

Survey @ 1955.7m: 1.49° 331.5Az

CLAYSTONE:lt med gry-med gry, arg,15-20% calc,tr vf aren,tr calcite,tr disse pyr,rr ool, tr foss,sft frm,sbbiky-blky.

Survey @ 1984.1m: 1.39° 329.8Az

CLAYSTONE:dk med gry-olv gry, arg,14% calc,tr calcite,rr ool, tr disse pyr,tr glauc,tr lams, sft frm,sbbiky-blky.

Survey @ 2012.5m: 1.45° 328.2Az

CLAYSTONE:dk med gry-olv gry, arg,17% calc,tr calcite,rr ool, tr disse pyr,tr foss,tr lams, sft frm,sbbiky-blky.

Survey @ 2040.9m: 1.49° 334.3Az

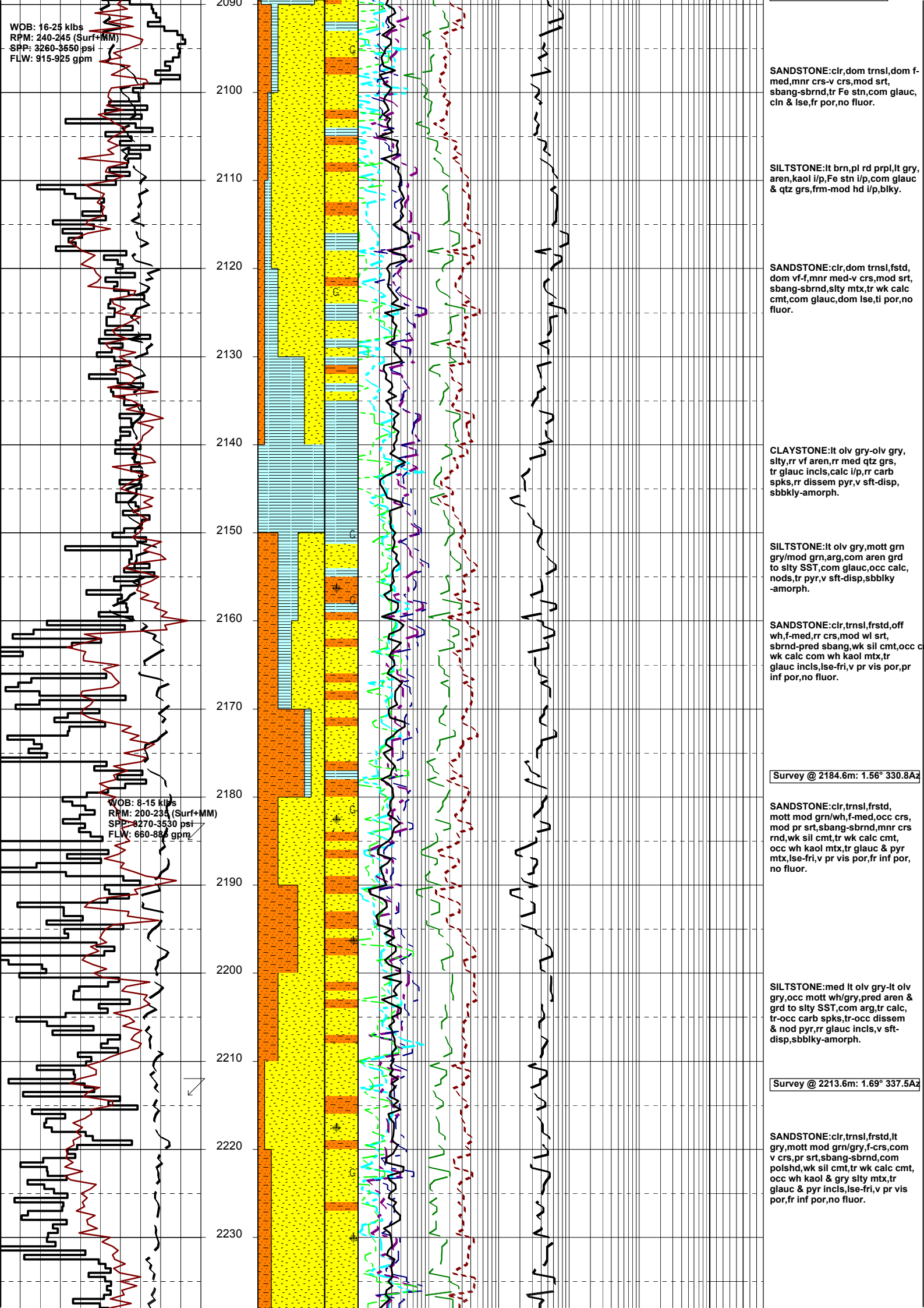
CLAYSTONE:lt med gry-lt olv gry,arg,20% calc,tr calcite,rr glauc,disse pyr,tr vf qtz grns, tr lams,v sft-sft,sbbiky-blky.

Survey @ 2069.4m: 1.39° 333.9Az

LATROBE FORMATION
2088m MD (2088m TVD)

WOB: 16-25 klbs
 RPM: 240-245 (Surf+MM)
 SPP: 3260-3550 psi
 FLW: 915-925 gpm

WOB: 8-15 klbs
 RPM: 200-235 (Surf+MM)
 SPP: 8270-3530 psi
 FLW: 660-885 gpm



SANDSTONE:clr,dom trnsl,dom f-med,mnr crs-v crs,mod srt, sbang-sbrnd,tr Fe stn,com glauc, cin & lse,fr por,no fluor.

SILTSTONE:lt brn,pl rd prpl,lt gry, aren,kaol i/p,Fe stn i/p,com glauc & qtz grs,frm-mod hd i/p,blky.

SANDSTONE:clr,dom trnsl,fstd, dom vf-f,mnr med-v crs,mod srt, sbang-sbrnd,slty mtx,tr wk calc cmt,com glauc,dom lse,ti por,no fluor.

CLAYSTONE:lt olv gry-olv gry, slty,rr vf aren,rr med qtz grs, tr glauc incls,calc i/p,rr carb spks,rr dissem pyr,v sft-disp, sbbkly-amorph.

SILTSTONE:lt olv gry,mott grn gry/mod grn,arg,com aren grd to slty SST,com glauc,occ calc, nods,tr pyr,v sft-disp,sbbkly -amorph.

SANDSTONE:clr,trnsl,frstd,off wh,f-med,rr crs,mod wl srt, sbrnd-pred sbang,wk sil cmt,occ wk calc com wh kaol mtx,tr glauc incls,lse-fri,v pr vis por,pr inf por,no fluor.

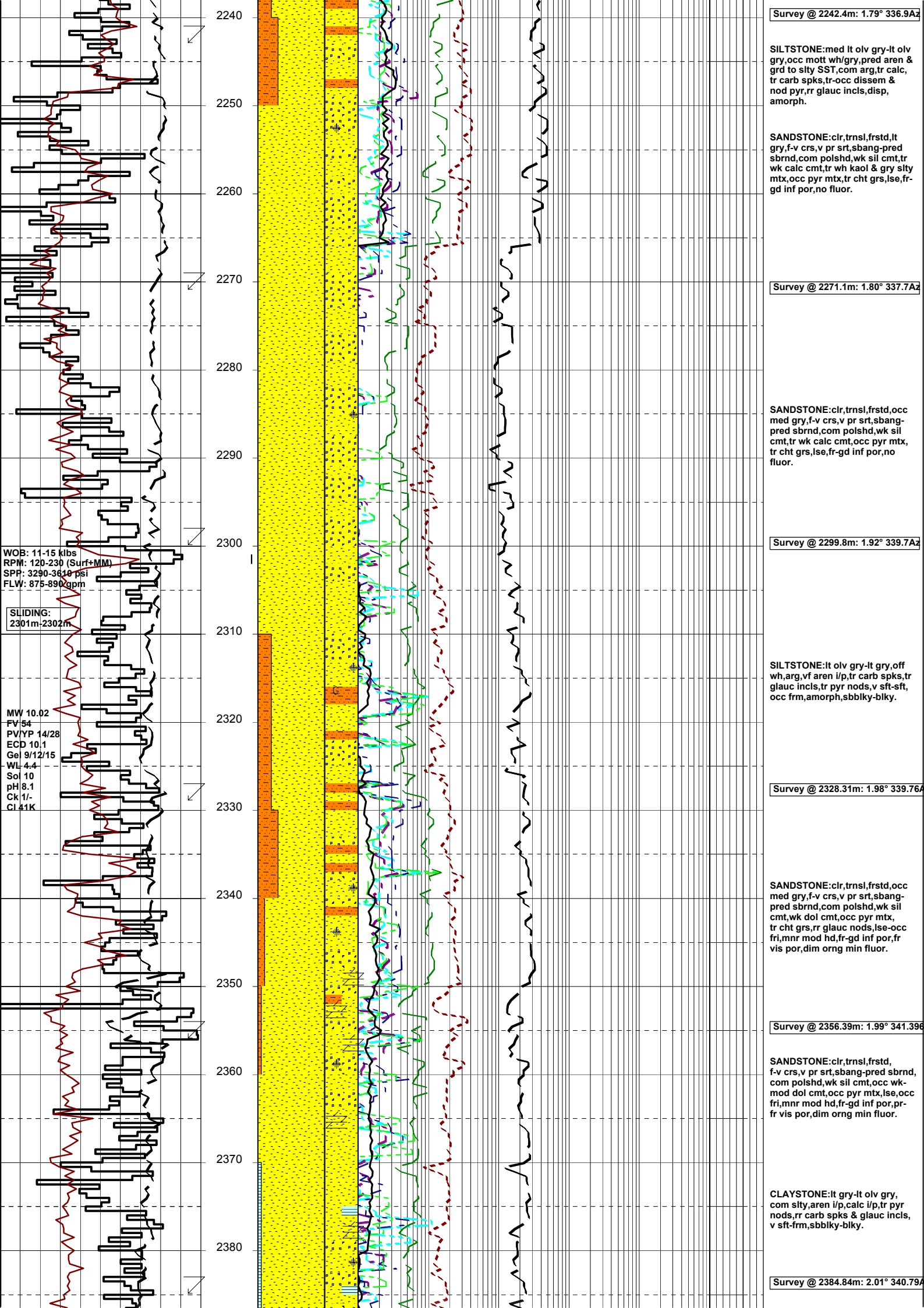
Survey @ 2184.6m: 1.56° 330.8Az

SANDSTONE:clr,trnsl,frstd, mott mod grn/wh,f-med,occ crs, mod pr srt,sbang-sbrnd,mnr crs rnd,wk sil cmt,tr wk calc cmt, occ wh kaol mtx,tr glauc & pyr mtx,lse-fri,v pr vis por,fr inf por, no fluor.

SILTSTONE:med lt olv gry-lt olv gry,occ mott wh/gry,pred aren & grd to slty SST,com arg,tr calc, tr-occ carb spks,tr-occ dissem & nod pyr,rr glauc incls,v sft-disp,sbbkly-amorph.

Survey @ 2213.6m: 1.69° 337.5Az

SANDSTONE:clr,trnsl,frstd,lt gry,mott mod grn/gry,f-crs,com v crs,pr srt,sbang-sbrnd,com polshd,wk sil cmt,tr wk calc cmt, occ wh kaol & gry slty mtx,tr glauc & pyr incls,lse-fri,v pr vis por,fr inf por,no fluor.



Survey @ 2242.4m: 1.79° 336.9Az

SILTSTONE: med lt olv gry-lt olv gry, occ mott wh/gry, pred aren & grd to slty SST, com arg, tr calc, tr carb spks, tr-occ dissem & nod pyr, rr glauc inclis, disp, amorph.

SANDSTONE: clr, trnsl, frstd, lt gry, f-v crs, v pr srt, sbang-pred sbrnd, com polshd, wk sil cmt, tr wk calc cmt, tr wh kaol & gry slty mtx, occ pyr mtx, tr cht grs, lse, fr-gd inf por, no fluor.

Survey @ 2271.1m: 1.80° 337.7Az

SANDSTONE: clr, trnsl, frstd, occ med gry, f-v crs, v pr srt, sbang-pred sbrnd, com polshd, wk sil cmt, tr wk calc cmt, occ pyr mtx, tr cht grs, lse, fr-gd inf por, no fluor.

Survey @ 2299.8m: 1.92° 339.7Az

SILTSTONE: lt olv gry-lt gry, off wh, arg, vf aren i/p, tr carb spks, tr glauc inclis, tr pyr nods, v sft-sft, occ frm, amorph, sbbiky-blky.

Survey @ 2328.31m: 1.98° 339.76Az

SANDSTONE: clr, trnsl, frstd, occ med gry, f-v crs, v pr srt, sbang-pred sbrnd, com polshd, wk sil cmt, wk dol cmt, occ pyr mtx, tr cht grs, rr glauc nods, lse-occ fri, mnr mod hd, fr-gd inf por, fr vis por, dim orgn min fluor.

Survey @ 2356.39m: 1.99° 341.39Az

SANDSTONE: clr, trnsl, frstd, f-v crs, v pr srt, sbang-pred sbrnd, com polshd, wk sil cmt, occ wk-mod dol cmt, occ pyr mtx, lse, occ fri, mnr mod hd, fr-gd inf por, pr-fr vis por, dim orgn min fluor.

CLAYSTONE: lt gry-lt olv gry, com slty, aren i/p, calc i/p, tr pyr nods, rr carb spks & glauc inclis, v sft-frm, sbbiky-blky.

Survey @ 2384.84m: 2.01° 340.79Az

WOB: 11-15 kibs
RPM: 120-230 (Surf+MM)
SPP: 3290-3610 psi
FLW: 875-890 gpm

SLIDING:
2301m-2302m

MW 10.02
FV 54
PV/YP 14/28
ECD 10.1
Gel 9/12/15
WL 4.4
Sol 10
pH 8.1
Ck 1/-
Cl 41K

